

Smartdop® ES-1000SPM

Surgical Doppler with Integrated Printer



Wide selection of interchangeable probe styles and frequencies

5, 8, 10 and 20 MHz frequencies

Durable, long lasting sealed probes

To withstand the demands of sterilization

Interchangeable probes

For user flexibility and standardization in the OR

Battery operated, simple and replaceable

Long lasting with no memory loss or downtime; uses 4 AA alkaline batteries

Integrated printer

Lightweight and simple to operate

Durable and cost effective

Surgical Probe Selection



P8M05S8A (8 MHz) *
P10M5S8A (10 MHz)

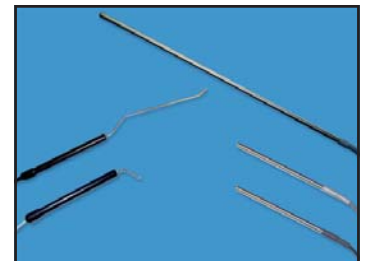
* Most commonly used



FDP-8
Flat Monitoring

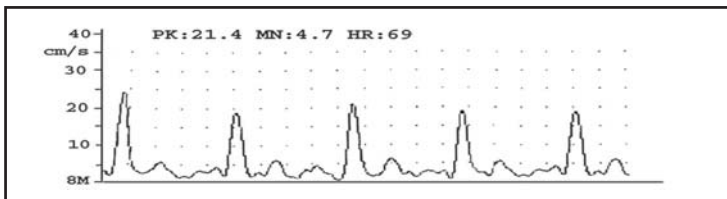


VDP-8
Pre-sterile, single use



Specialty Probes

Print Sample



Specifications

Operation: Power switch (one-push type, ON/OFF)
Batteries: 4 AA alkaline
Max. speaker output: 250 mW or more
Power consumption: 500 mW or less
Printer: Thermal scanning; 256 dots

Write speed: 2.5 mm/sec.
Paper: 58 mm x 25 m (TF5)KS-4A
Time scale: 25 mm/sec.
Max. recording length: 12.5 cm
LED bar graph: 20 point LED horizontal dots
Dimensions: 107(W) x 230(L) x 62(H) mm

Battery check: Green LED lamp
External output: PHONE: 220 mV impedance 270Ω
Weight: 500 grams (main unit)
Electrical Safety: Conforms to IEC60601-1

Order Information

Includes: Smartdop® ES-1000SPM Doppler, carrying case, 1-ultrasound gel, 4-AA alkaline batteries, 1-printer paper, headset, operator's manual

Accessories: Probes, AC adaptor

Contact Koven Technology, Inc. for other probe models including pre-sterile single use, laparoscopic, & bayonet style neuro probes

Smartdop is a registered trademark ® of Koven Technology, Inc. St. Louis, MO, USA



Koven Technology, Inc.

12125 Woodcrest Executive Dr., Suite 320, St. Louis, MO 63141
Tel: 800-521-8342 / 314-542-2101 • Fax: 314-542-6020
info@koven.com • www.koven.com