

Smartdop[®] 50EX-F

Bidirectional Doppler with Frequency Analysis



Bidirectional Doppler with printer and visual waveform display

Prints high resolution waveforms fast for third party reimbursement

32 memory storage

Save waveforms and numerical data for later use or download to optional software

RS-232 computer interface & optional software

Transfer waveforms and numerical data to a computer for data storage

Auto gain control

Smartdop automatically adjusts the gain and baseline for ease of use

Numerical velocity

Peak, mean velocity, & heart rate

PPG & pneumo (pulse volume) options

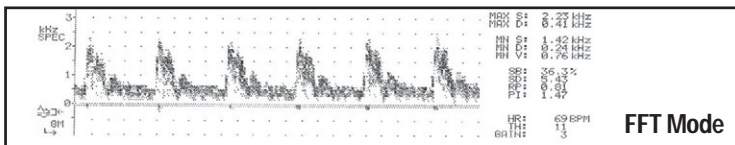
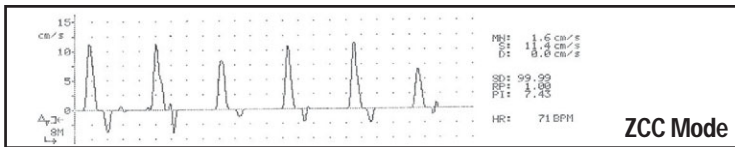
Expands arterial & venous testing

MAX, MEAN, Spectrum Analysis, and ZCC (CW Doppler) modes available

Clinical Applications

- Extracranial Doppler Frequency Analysis
- Ankle Brachial Index (ABI)
- Peripheral Vascular Procedures
- Segmental Studies
- Penile Systolic Pressures
- Venous Compression & Outflow Studies
- PPG Venous Reflux
- PPG Toe Pressures & Toe Brachial Index (TBI)

Print Samples



Smart-V-Link[®] Software (optional)



Save up to 32 patient waveforms in Smartdop[®] 50EX-F and download to Smart-V-Link[®] to save patient records and print hard-copy reports.

Specifications

Power:	NI-MH rechargeable battery pack or AC adapter	Multi. probe freq.:	5, 8, 10 MHz (CW bidirectional)	Time scale:	Arterial: 0.2 s/div; Venous: 1 s/div.
Full charge life:	3 hours (or more if used in Freeze mode)	Freq. ranges:	200 Hz to 32 kHz	LCD display:	240 x 64 dots
Auto shut off:	No signal: 2 min.; Freeze: 10 min.; Other: 15 min.	Printer:	58mm (W) x 25m (L) / roll thermal	Headset output:	3.5 mm jack, 100Ω
Speaker:	250 mW or more	Paper:	256 dots/line	Dimensions:	252(W) x 187(D) x 91(H) mm
		Resolution:	2.5 mm/sec	Weight:	Approx. 1.5 kg
		Print speed:		Electrical Safety:	Conforms to IEC60601-1

Order Information

Includes: Smartdop[®] 50EX-F Doppler, 1-probe (specify frequency)

Accessories (included): AC Adaptor, 1-roll paper, 1-tube ultrasonic gel, operator's manual

Accessories (optional): Headset, PPG & Pneumo modules, Smart-V-Link[®] Software

Smartdop is a registered trademark [®] of Koven Technology, Inc. St. Louis, MO, USA



Koven Technology, Inc.
 12125 Woodcrest Executive Dr., Suite 320, St. Louis, MO 63141
 Tel: 800-521-8342 / 314-542-2101 • Fax: 314-542-6020
 info@koven.com • www.koven.com